

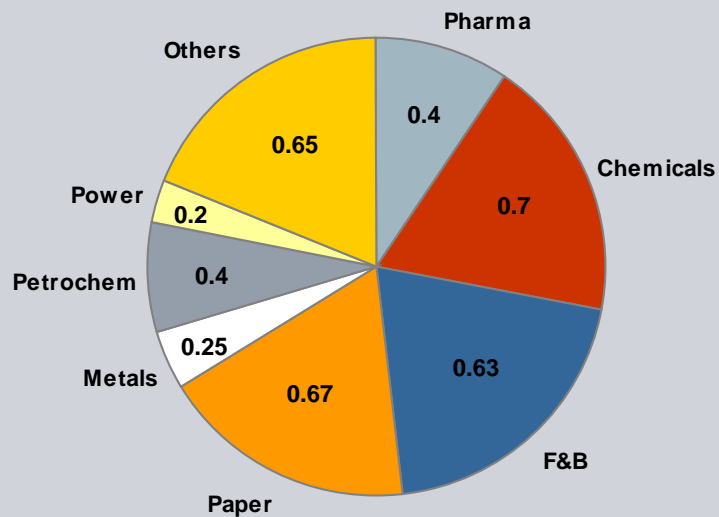
Answers for Water

SIWW Europe Business Forum
June 25th, 2009

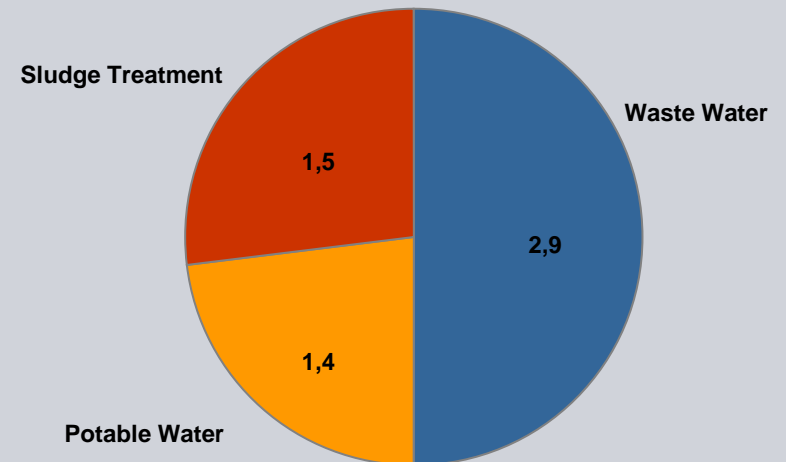
Jens Wegmann
Siemens AG
CEO Industry Solutions Division

European Water Market Facts and Trends

Industrial Water and Waste Water €3.9 billion



Municipal Water and Waste Water €5.8 billion



Market requirements

- Optimum reliability and availability of the supply system, providing water of an exactly defined quality
- Costs for water and waste water, also and in particular as a production factor in industry
- Protect the environment through sustainable solutions

Siemens answers: Water Hub Europe

SIEMENS



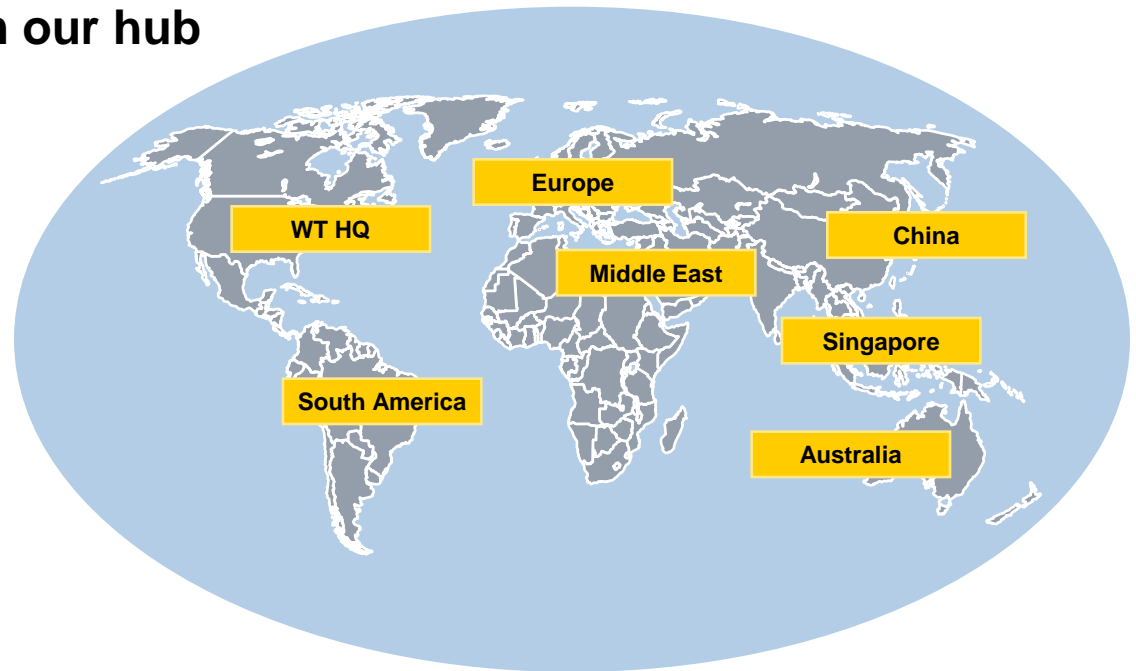
- Various CoCs **provide** area-wide **expertise** for water applications and technologies
- Realization of European hub structure is an important step towards sustainable market **penetration**

Siemens Water Technologies in Europe is more than
a number of locations ...

WT Hubs enable us to drive our global business according to regional demands

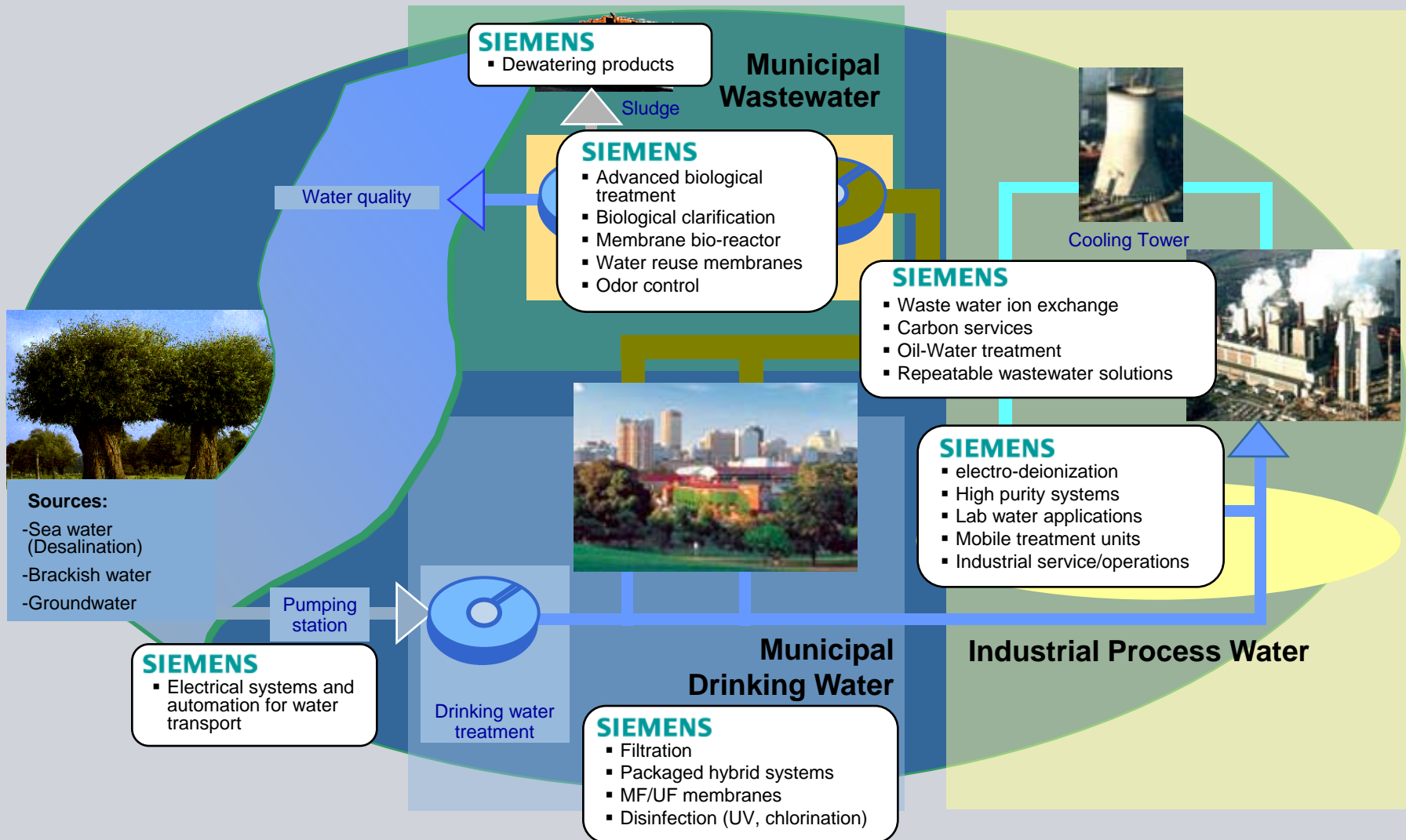
The customers benefit from our hub concept

- Global know-how transfer
- Addressing the customer locally
- Expertise is made available nearby
- "Focus market" approach



... it is part of a worldwide family

Our portfolio comprises technologies and services for all segments along the water cycle



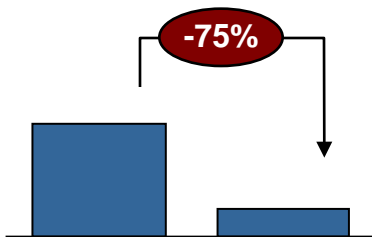
Innovative solutions for ecological and economic benefits

Wastewater treatment plant at Khon Khaen, Thailand



- Waste-to-energy solution for a brewery
- Methane gas won can be used as fuel

Energy savings compared to alternative technology

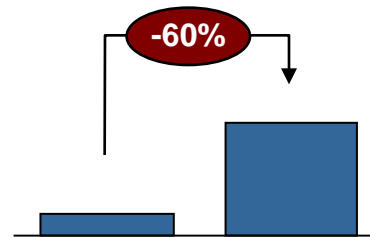


New business model for Intel, Ireland



- Stop transportation of waste water to the US
- Resin/Carbon exchange service by a local regeneration service

5x the capacity of conventional clarification with same footprint

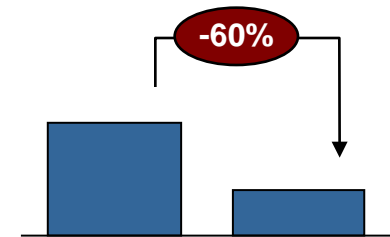


Sludge reduction with Cannibal solution, Turkey

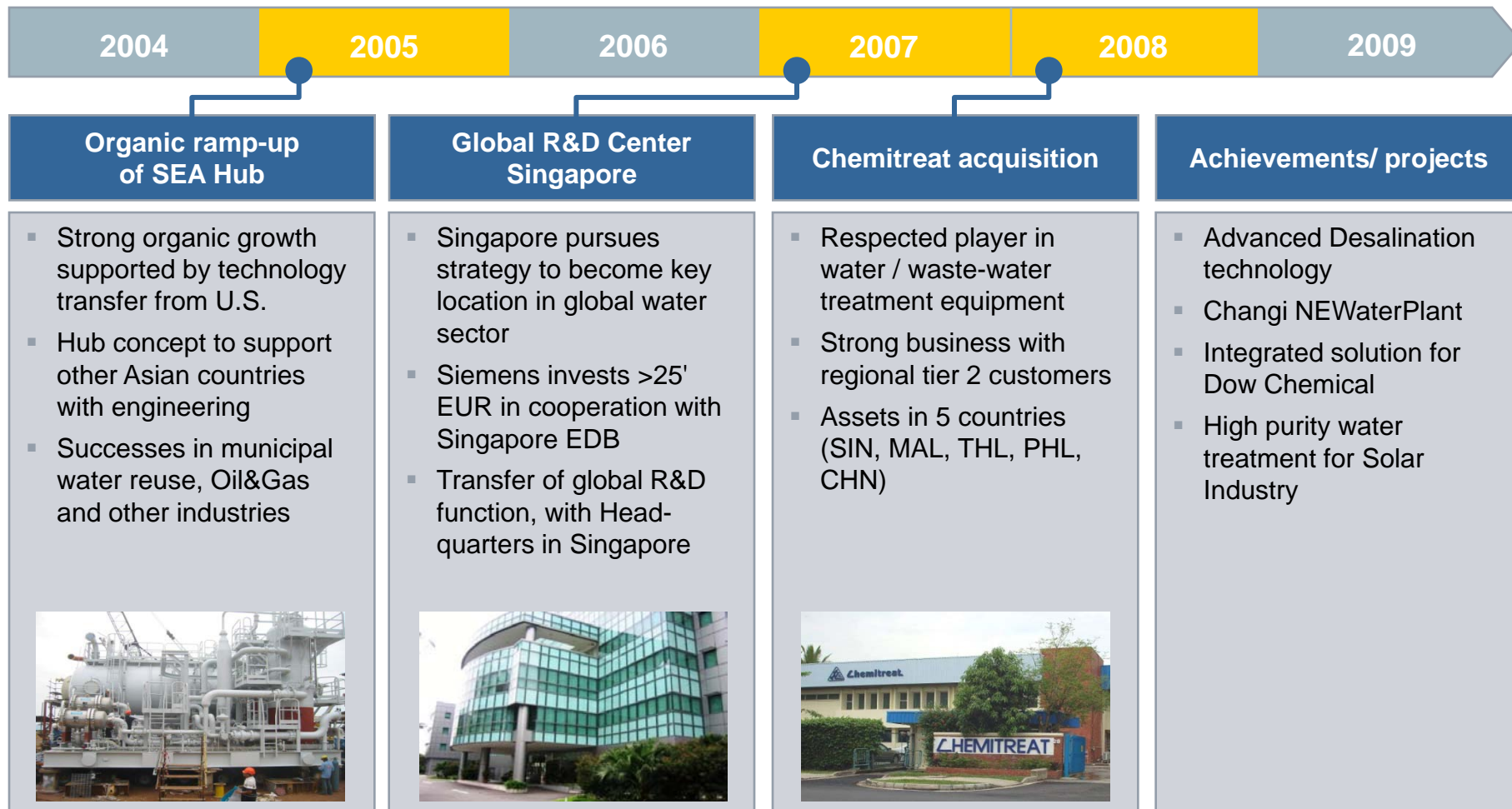


- Retrofit aeration tanks with VertiCel (minimize energy consumption)
- Upgrade to Tow-Bro high-rate clar. (improve sludge removal efficiency)

Reduce biosolids by 60 %



Siemens' commitment to Singapore as Water Hub for fast-growing South-East Asian market



An aerial, high-angle photograph of a swimming pool. The pool is filled with clear blue water, and several lane lines are visible, creating a grid of lanes. The pool is surrounded by a concrete deck. The lighting is bright, creating reflections on the water's surface.

SIEMENS

Thank you for your attention!

Answers.