

SEA Business Forum

Wednesday, 24 June 2009

Water Situation in Cambodia

By Ek Sonn Chan

General Director
Phnom Penh Water Supply Authority (PPWSA)
Email: eksonnchan@ppwsa.com.kh



THE KINGDOM OF CAMBODIA



Area: 181,035km²

Water: 2.50% (4,520km²)

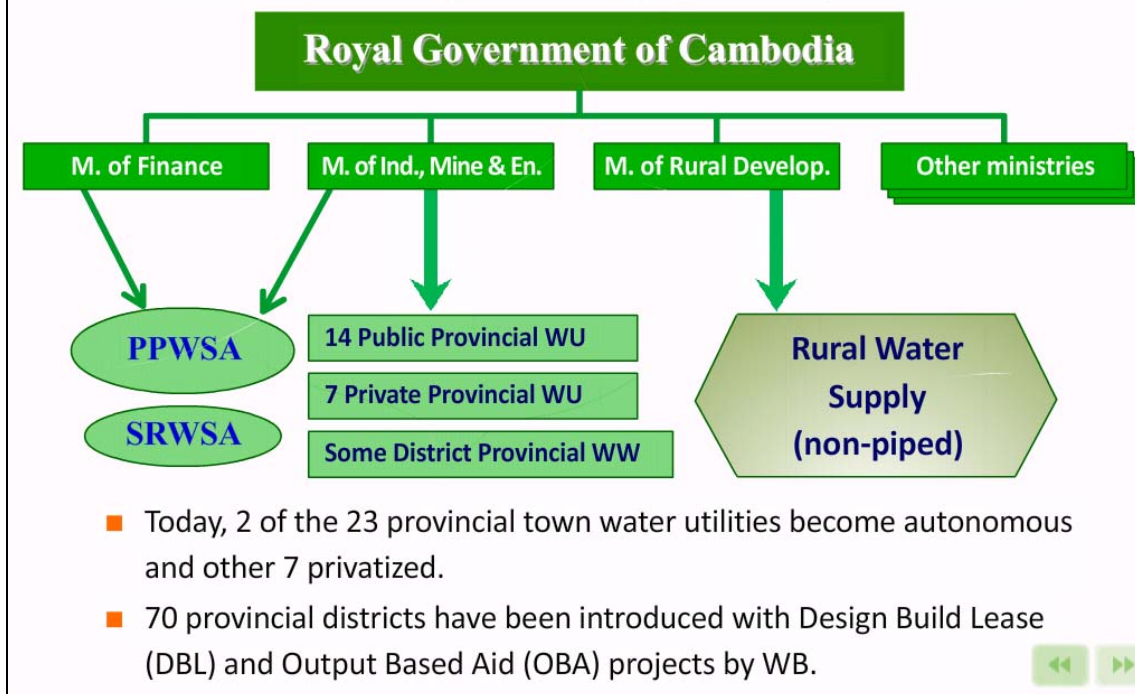
Population: 13,388,910

Note :

- ◆ 1863-1953: Under French Protection
- ◆ 1955-1970: Kingdom of Cambodia
- ◆ 1970-1975: Khmer Republic
- ◆ 1975-1979: Khmer Democratic (Pol Pot Regime)
- ◆ 1979-1993: People's Republic of Kampuchea
- ◆ 1993-Now : Kingdom of Cambodia



Water supply Sector Rebuilding from virtually nothing in early 1990s



Cambodia Millennium Development Goals (CMDG), 2004

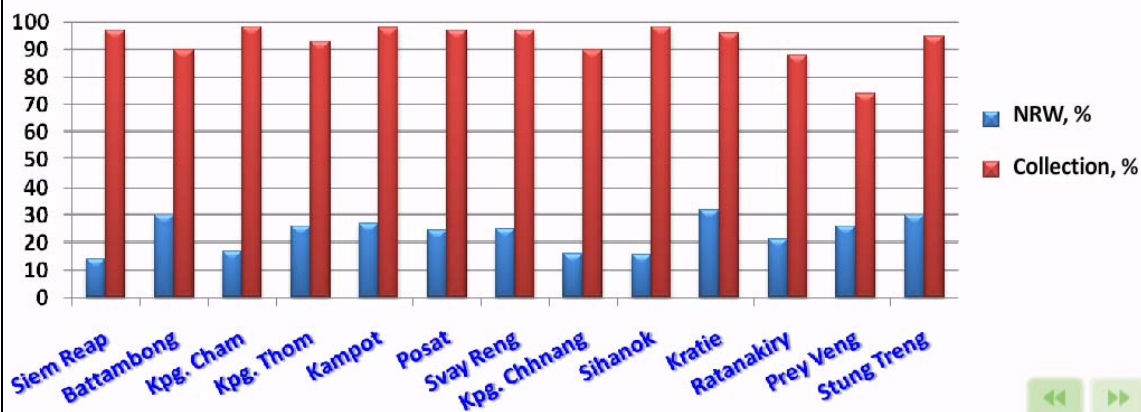
| Access to safe water | Targets | | |
|----------------------|---------|------|------|
| | 2005 | 2010 | 2015 |
| Urban population | 68% | 74% | 80% |
| Rural population | 30% | 40% | 50% |

In 2006 (WHO & UNICEF's Survey):

- ✓ 61% of Rural, and
- ✓ 80% of Urban have access to safe water by
 - household connections,
 - public standpipes,
 - boreholds,
 - protected dug wells,
 - protected springs, or
 - rain water collection.

Performance of Provincial Water Utilities

- a) Coverage: 20 - 60%
- b) Finance: Gov. Subsidy & Full Cost for SRWA
- c) Tariff: Flat/Block, 0.13 - 1USD/m³
- d) NRW: 16 - 32%
- e) Collection rate: 74 - 80%
- f) Staff qualification: Low



MIME-STRATEGIC ACTION PLAN 2006-2010 FOR P.W.S.S

- a) Expand service
- b) Upgrade quality of service
- c) Improve efficiency and financial viability
- d) Address specific needs of the poor
- e) Protect environment.

MiME's On Going Actions

Short Term Goals (2006 - 2009)

- a) **Capacity building and development**
 - ☞ JICA's Capacity Building Phase 1 (2003 - 2006) and 2 (2007 - 2011) for 19 Urban Water Utilities
- b) **Organizational and institutional strengthening**
 - ☞ Draft Law on Creating Water Regulator
- c) **Maintaining of Infrastructure and Steady expansion of coverage**
 - ☞ Improvement and Extension of Supply Capacity in 6 provinces under ADB's Loan (hand over 2008)
 - ☞ Improvement and Extension of Supply Capacity in 2 provinces in the North under ADB's Loan (starting)
- d) **Improving financial performance**
 - ☞ Tariff Revision (some finished / some ongoing)



MiME's Medium and Long Term Goals

Medium Term Goals (2010 - 2012)

- a) Full commercialization and autonomy
- b) Safety & Quality of water
- c) Sustainability: strengthening water supply systems, preserving and developing practices and skills, improving customer service
- d) Full speed of development and expansion

Long Term Goals (2013 - 2015)

- Building a strong public sector
- Building a strong sector financing: self-reliant finance
- Stability: stable water supply, any time & anywhere
- Building strong supporting industry for water
- Globalization

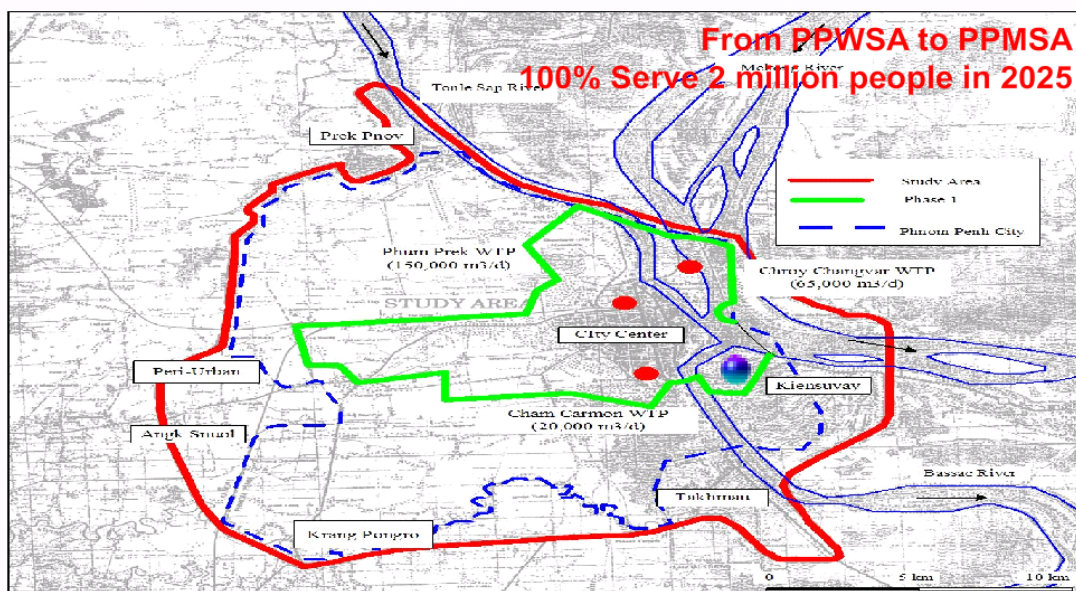
Estimated Financing to achieve CMDGs in urban water and sanitation by 2015 : up to US\$ 30 million annually.



PPWSA

| 1993 | INDICATORS | 2008 |
|---------|--|------------|
| 20 | Staff/1,000 connections | 4 |
| 65,000 | Production capacity, m ³ /d | 300,000 |
| 20% | Coverage area | 90% |
| 10 hr/d | Supply duration | 24 hr/d |
| 0.2 bar | Supply pressure | 2.5 bars |
| 26,881 | Number of connections | 178,200 |
| 72% | NRW | 6.19% |
| 48% | Collection ratio | 99.9% |
| 150% | Operation ratio | 39.04% |
| N/A | Return on revenue | 23.89% |
| N/A | Return on net asset | 6.96% |
| N/A | Current ratio | 2.74 times |
| N/A | Debt service coverage | 3.18 times |
| N/A | Accounts Receivable | 22 days |

THE UPCOMING PROJECT...



- ✓ **2009 – Phase 1: ~US\$ 70.4 million with production capacity 130,000m³/day and 195km of distribution network**
- ✓ **2015 – Phase 2: ~US\$ 55.5 million with production capacity 130,000m³/day and 195km of distribution network**



Thank You