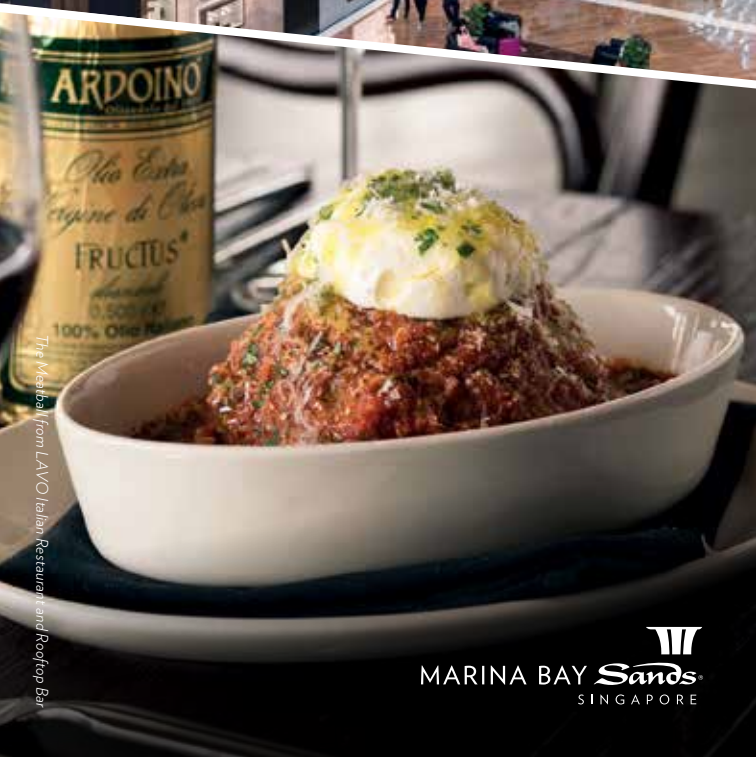


GUEST PRIVILEGES

Present your hotel key card, event badge/pass, museum or theatre show tickets to enjoy these privileges!



The Mesbah from LAVO Italian Restaurant and Rooftop Bar

INSTANT REWARDS OF



Join Sands Rewards LifeStyle –
the most generous rewards programme.

UP TO
9% INSTANT
REWARD
DOLLARS

OVER
200 PARTICIPATING
OUTLETS

**UNLIMITED
EARNINGS***

Sign up for **FREE** at
any membership counter located at:

- Hotel Lobby Tower 1
- Level B1 (above Sampan Rides)
- Level B2 (near Digital Light Canvas)

*Terms and Conditions apply.

Present your hotel key card, event badge/
pass, museum or theatre show tickets to
enjoy these privileges!



SANDS REWARDS OUTLET

Earn and redeem rewards here

FASHION

L1-16	3.1 Phillip Lim	10% off regular-priced items.
B2-15	A X Armani Exchange	10% off regular-priced items.
L1-25	Anne Fontaine	Complimentary gift with a minimum spend of \$2,000 in a single receipt. Sands Rewards members enjoy 10% off regular-priced items with a minimum spend of \$1,000 nett.
B1-29 & B2-27	Armani/ Marina Bay	10% off regular-priced items.
B1-78	BALLY	Complimentary gift with a minimum spend of \$1,000.
B1-81	Brunello Cucinelli	10% off regular-priced items. Additional 10% off with a minimum spend of \$5,000 nett; plus an additional gift with a minimum spend of \$10,000 nett.
B1-118	Chloé	Complimentary gift with a minimum spend of \$4,000 nett (minimum spend of \$2,500 nett for Sands Rewards members, plus complimentary alteration service of regular-priced items and delivery services of Chloé merchandise within Singapore).
B2-101	Club Monaco	10% off regular-priced items.
B1-68	Comme des Garçons PLAY	10% off regular-priced items.
B2-91	eq:iq	10% off regular-priced items.
B2-98	Ferrari Store	5% off regular-priced items. Excludes special and limited edition items.



JEWELLERY

- ◆ Hotel Lobby, L1-15 **FREYWILLE** 5% off one enamel product; 10% off two enamel products; 15% off three enamel products.
Sands Rewards members enjoy 10% off one enamel product; 15% off two enamel products.
**For regular-priced enamel products only.*

WATCHES

- ◆ B2M-237 **Blancpain** Exclusive extended warranty with any timepiece purchased
Sands Rewards members enjoy an additional complimentary gift.
- ◆ B2-K7 **Calvin Klein** Complimentary gift with any watches + jewelry timepiece purchased.
- ◆ B1-90A **LONGINES** Complimentary gift with any timepiece purchased.
- ◆ B1-86 **RADO** Complimentary gift with every timepiece purchased.
Sands Rewards members enjoy a complimentary Rado Pen with every timepiece purchased.

HANDBAGS, SHOES & ACCESSORIES

- ◆ L1-17 **BAO BAO ISSEY MIYAKE** 10% off regular-priced items.
- ◆ B2-111 **Braun Büffel** 10% off regular-priced items.
- ◆ B1-127 **Christian Louboutin** Complimentary delivery service to selected locations within Singapore. Check in-store for more details.
Sands Rewards members receive a complimentary gift upon designated purchase amount. Check in-store for more details.
- ◆ B2-95 **ECCO** 10% off regular-priced items with a minimum spend of \$400 in a single receipt.
- ◆ B2-100 **Pedro** 10% off regular-priced items. Complimentary Pedro Platinum membership with a minimum spend of \$200 in a single receipt (usual: \$250).

- ◆ L1-17 **HOMME PLISSÉ ISSEY MIYAKE** 10% off regular-priced items.
- ◆ B2-86 **Juicy Couture** 10% off regular-priced items with a minimum spend of \$350.
- ◆ L1-28 **Marisfrolg** 40% off selected items. Check in-store for more details.
- ◆ L1-26 **MOISELLE** 10% off regular-priced items
Sands Rewards members enjoy 12% off regular-priced items.
- ◆ L1-17A **MSGM** 10% off regular-priced items.
- ◆ L1-41 **Mulberry** 10% off regular-priced items.
- ◆ B1-82 **Paul & Shark** 5% off regular-priced items
Sands Rewards members enjoy 10% off regular-priced items.
- ◆ L1-17 **PLEATS PLEASE ISSEY MIYAKE** 10% off regular-priced items.
- ◆ L1-13 **Repetto** 10% off regular-priced items. Additional 10% off with a minimum spend of \$600 nett.
- ◆ B2-110 **Ted Baker** 5% off regular-priced items with a minimum spend of \$200 nett (**10% off for Sands Rewards members**).

◆ B2-45 Spectacle Hut Boutique Complimentary gift with eyewear purchase. Selected brands only.
Sands Rewards members enjoy 15% off regular-priced items. Excludes Cartier, Chanel, Rayban & Oakley products.

◆ B2-41 TUMI Complimentary gift with a minimum spend of \$1,000
(minimum spend of \$500 for Sands Rewards members).

SPORTS, BEAUTY & WELLNESS

◆ L1-31 & B2-K4 Elevation Time Stops Complimentary gift with a minimum spend of \$1,000
Sands Rewards members receive a complimentary gift with a minimum spend of \$500.

◆ B2-56B GNC 15% off regular-priced items.

◆ Coach Bay, B1-02 Lacquer & Spa 10% off total services **(20% off for Sands Rewards members)**. Follow Lacquer & Spa's Facebook page to enjoy an additional 5% off.

◆ B2-K17 Onsen Complimentary gift with a minimum spend of \$500.
Sands Rewards members receive a complimentary gift with a minimum spend of \$250.

◆ L1-08 & B2-K1 Orogold Cosmetics Complimentary VIP facial with a minimum spend of \$500
(minimum spend of \$250 for Sands Rewards members).

◆ L1-33 Penhaligon's Complimentary Fragrance Profiling session (with up to 2 complimentary fragrance samples).
Sands Rewards members enjoy 5% off regular-priced items with a minimum spend of \$350. Excludes Portraits Collection.

B2-118 Puma Select 10% off regular-priced items.

◆ B1-02 Salon 360^o 20% off à la carte hair services **(25% off for Sands Rewards members)**. Excludes Occasion Styling and Make-up.

◆ L1-69 Skins 2|3 Complimentary VIP facial with a minimum spend of \$500
(minimum spend of \$250 nett for Sands Rewards members).

CHILDREN'S FASHION & MATERNITY

◆ B1-62 Armani Junior 10% off regular-priced items. Excludes basic and consignment items.

◆ B1-61 Bonpoint 10% off regular-priced items. Excludes basic and consignment items.

◆ B1-59 KENZO KIDS 10% off regular-priced items. Excludes basic and consignment items.

◆ B1-59 Kids 21 10% off regular-priced items. Excludes basic and consignment items.

◆ B1-59 Paul Smith Junior 10% off regular-priced items. Excludes basic and consignment items.

◆ B1-59 Stella McCartney Kids 10% off regular-priced items. Excludes basic and consignment items.

ELECTRONICS & TELECOMMUNICATIONS

B2-60 EpiCentre 10% off regular-priced items with a minimum spend of \$300 **(15% off for Sands Rewards members)**. Excludes Apple products, storage and electronic products, software, and toys.

LIFESTYLE & GIFTS

◆ B2-117 House of Samsonite 5% off regular-priced items. Excludes Curv collection.

B2M-244 RISIS
- 10% off regular-priced items.
- Complimentary RISIS gift with any purchase of natural orchid items. Excludes designer frame items.

◆ B2-92 Royal Selangor 10% off regular-priced items. Excludes limited edition items.

SIGNATURE RESTAURANTS

- ◆ Hotel Lobby Tower 2 **Adrift** by Chef David Myers 25% off à la carte lunch, dinner & lounge menu items.

- ◆ Hotel Tower 2 Level 55 **Club55** 10% off total bill.

- ◆ B1-48 **db Bistro & Oyster Bar** by Chef Daniel Boulud 1-for-1 on the White Cosmopolitan cocktail from 6pm daily.

- ◆ L2 Dining, L2-02 **Long Chim** by Chef David Thompson 10% off total food bill (**15% off for Sands Rewards members**). Valid for à la carte menu only.

- ◆ Hotel Lobby Tower 1 **Renku** 25% off total bill.

- ◆ B1-07 & L1-82 **The Bird & Southern Table & Bar** 15% off à la carte bill.

- ◆ L2 Dining, L2-01 **Waku Ghin** by Chef Tetsuya Wakuda 1-for-1 on any standard cocktail. Valid at The Bar only.

Payment must be made by credit or debit cards only.

GOURMET & SPECIALTY FOOD

- L1-72 **LiHO** Enjoy Earl Grey Milk Tea @ \$2.15 (U.P. \$2.50)

- ◆ Hotel Lobby Tower 3 & Sands Expo, Level 3 **SweetSpot®** Free up-size for all coffee beverages. **Sands Rewards members enjoy a complimentary cookie with a minimum spend of \$20 nett.**

- ◆ B2-K15 **Venchi** Complimentary baby gelato (chocolate flavour only) with a minimum spend of \$250 nett.

Looking for a private dining space to host a business meeting or event?
Email RestaurantSales@MarinaBaySands.com to start planning!

RESTAURANTS

- L1-84 **Bazin** 10% off total bill.

- ◆ B1-01B **Black Knight Warrior** \$30 off regular-priced items with a minimum spend of \$150 nett. Not valid on eve of Public Holidays and Public Holidays.

- ◆ L1-85 **Dallas Café & Bar** 10% off total bill.

- ◆ L1-03 **DC Comics Super Heroes Cafe** 10% off total bill. Not valid with set menus.

- B2-47 **High Society** 1-for-1 main course or pasta. Not valid on weekends, eve of Public Holidays and Public Holidays.

- ◆ L2 Dining, L2-03 **Seafood Paradise** 10% off à la carte food items. Excludes service charge and GST. Valid for dine-in only. Not valid on eve of Public Holidays, Public Holidays and festive occasions.

- ◆ L1-86 **Sen of Japan** 10% off à la carte menu items (**15% off for Sands Rewards members**). Excludes bento set and donburi. Not valid on eve of Public Holidays and Public Holidays.

- ◆ B2-120 **tcc – The Connoisseur Concerto** 15% off à la carte food items.

- ◆ B1-122 & B2-65 **TWG Tea Salon & Boutique** Complimentary box of six macarons (to be redeemed at TWG Tea Boutique) with a minimum spend of \$150 nett at TWG Tea Salon.

LEISURE & ENTERTAINMENT

◆ Bay Level	ArtScience Museum™	15% off* Standard tickets. MICE delegates enjoy special discount of \$1 off Local Adult admission tickets.
◆ Canal Level	Sampan Rides	20% off* Sampan Rides.
◆ Hotel Tower Level 57	Sands SkyPark®	20% off* entry tickets.

* Terms and Conditions apply. To find out more, please visit any Marina Bay Sands Box Office.

◆ Sands Rewards outlets for earning and redemption of rewards as of June 2018. Sign up at any Sands Rewards LifeStyle counter before your next purchase to enjoy exclusive member benefits and earn instant rewards. ^

Level Guide for The Shoppes at Marina Bay Sands: L1 – Bay Level | B1 – Galleria Level | B2M – Casino Level B2 – Canal Level

Terms and Conditions

1. Retail offers are valid from 1 July to 31 December 2018 (inclusive) at The Shoppes at Marina Bay Sands only.
2. Offers are on a first-come-first-served basis, while stocks last.
3. Offers cannot be exchanged for cash, other vouchers or coupons.
4. Offers cannot be used in conjunction with any other special offers, coupons or VIP cards.
5. Offers are redeemable upon presentation of event badge/pass, museum or theatre show ticket or hotel key card prior to purchase.
6. Offers are valid on the actual dates of hotel stays and events, and for one week from the date of theatre show or museum entry (inclusive).
7. Exclusions and other Terms and Conditions may apply. Please check with respective stores and box offices for more details.
8. Marina Bay Sands Pte Ltd may at any time change or withdraw an offer without prior notice.
9. In the event of any dispute, the decision of Marina Bay Sands Pte Ltd is final and binding.

^ Membership card must be presented personally at the point of purchase or redemption. There is no refund or retroactive credit for all Sands Rewards transactions. Patrons must be at least 21 years of age to join. Sands Rewards outlets are subject to change without prior notice. Earning of rewards is only available for selected shows at Sands Theatre. Other Terms and Conditions apply.

Information correct as of April 2018.

EXPLORE MARINA BAY SANDS ON YOUR MOBILE

Download our Pocket Concierge app by scanning this QR code:
Alternatively, search for "Marina Bay Sands" in the
iTunes App Store / Google Play.



ARTSCIENCE MUSEUM™ & TEAMLAB PRESENT

FUTURE WORLD

WHERE ART MEETS SCIENCE

ATTRACTIONS



Be immersed in a world of art, science, magic and metaphor through a collection of cutting-edge digital installations.



1-FOR-1 TICKETS*

with your FREE Sands Rewards membership.

*Terms and Conditions apply.



Official Projection Partner

Panasonic
BUSINESS



**ArtScience
Museum**
MARINA BAY SANDS



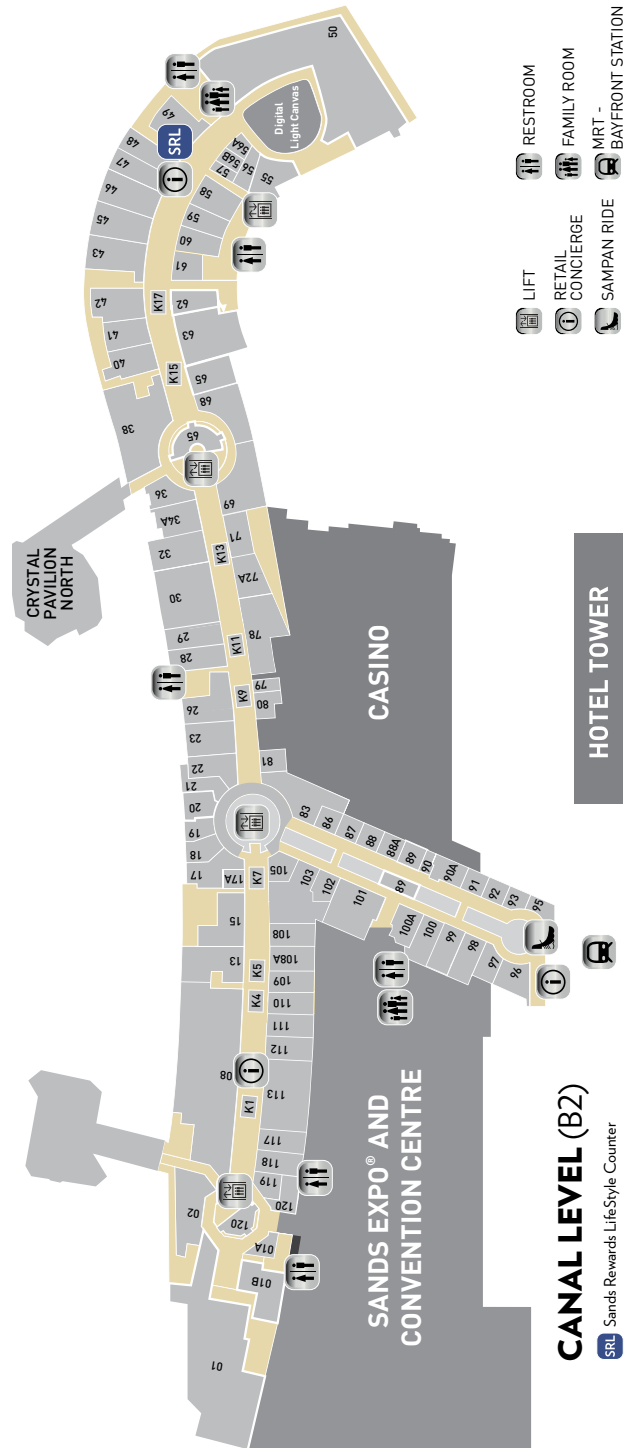
EXPERIENCE THE LIGHT & WATER DISPLAY

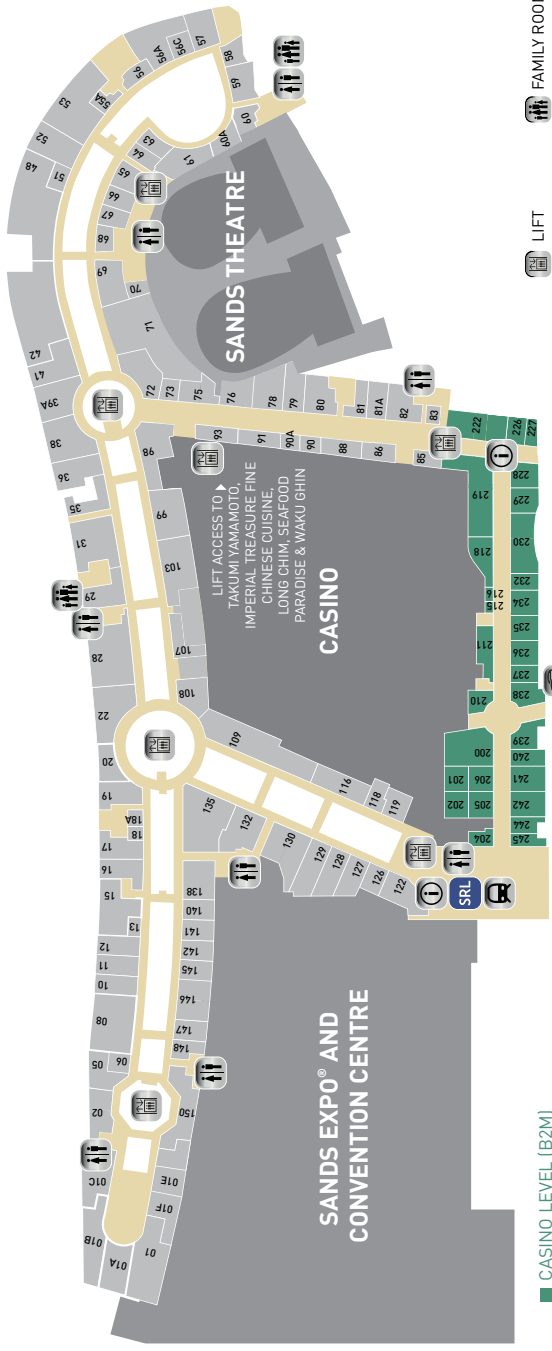


Shown free nightly from 8pm
at the Event Plaza.

MARINABAYSANDS.COM/SPECTRA

COME ALIVE



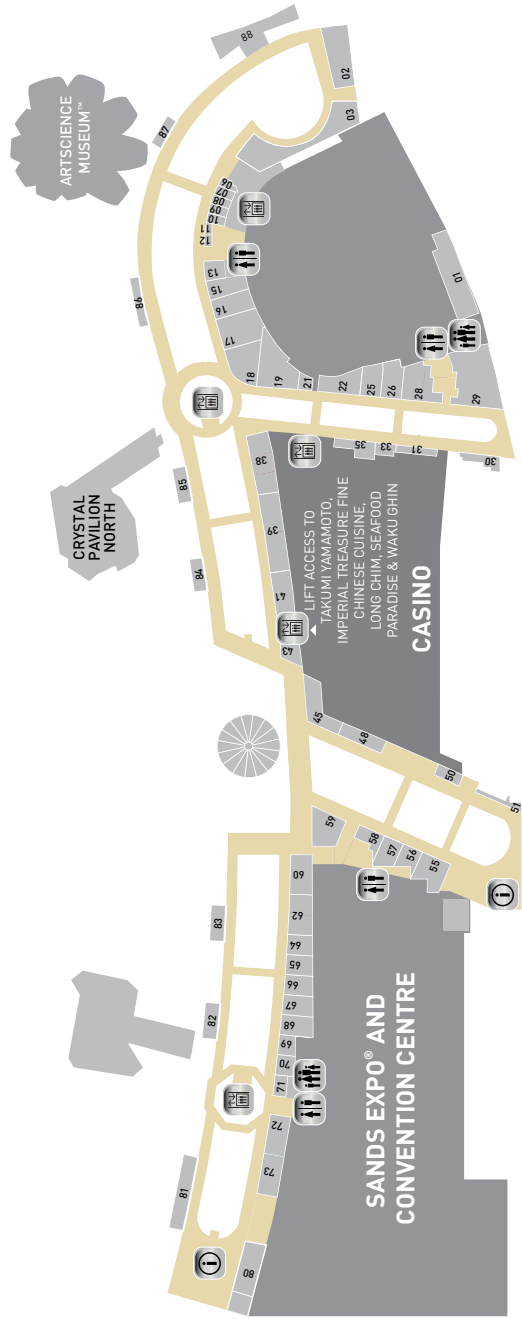


CASINO LEVEL (B2M)

GALLERIA LEVEL (B1)

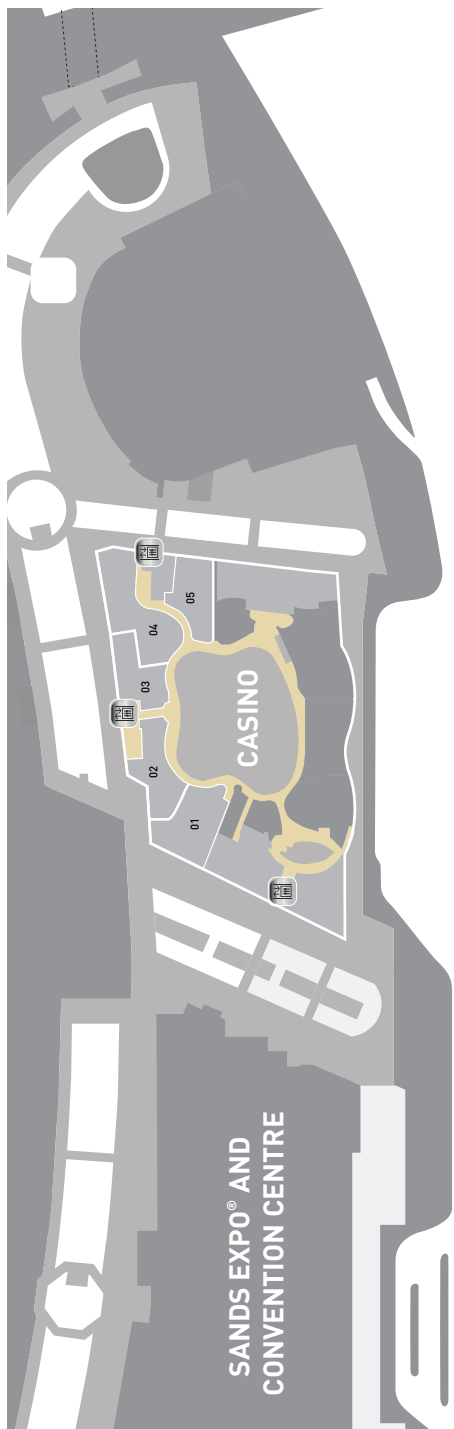
SRL Sands Rewards LifeStyle Counter

- LIFT
- RETAIL CONCIERGE
- RESTROOM
- FAMILY ROOM
- COACH BAY



BAY LEVEL (L1)

- LIFT
- RETAIL CONCIERGE
- RESTROOM
- FAMILY ROOM
- RESTROOM



HOTEL TOWER

ATRIUM LEVEL (L2)



DISCOVER BLISS 至福の体験

AT AWARD-WINNING BANYAN TREE SPA
多数の受賞歴に輝くバンヤンツリー・スパ

地上55階からの壮大な景色とアジアの伝統的な癒しで
心身と五感を活性化させましょう。



BANYAN TREE
— SPA —
MARINA BAY SANDS

ホテルタワー1、55階
営業時間：午前10時～午後11時
ご予約は、電話+65 6688 8825、
または内線88825まで。

